

Do you have concerns about your
child's development or behaviors?
Suspect something else is going on?
Or just not sure if you should
be worried at all?

**We have a
path forward.**



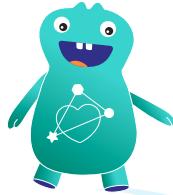
canvas Dx
by cog'noa

Knowing is the Earliest Intervention

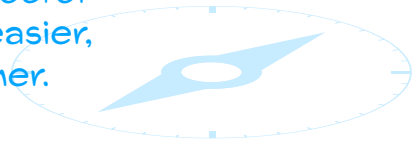
In child developmental and behavioral health, early is everything.

In early childhood, more than 1 million neural connections are formed every second. During these critical years, the right interventions and support can be life-changing.

But the process to evaluate your child for developmental delays or conditions such as autism can take months – *even years*. It can mean many appointments with different clinicians and long wait times to get a diagnosis and the support your child needs.



With Canvas Dx, you and your doctor
are at the center of a faster, easier,
smarter way forward. Together.



Canvas Dx is a digital assessment that doctors use to:

- Better understand your child's developmental strengths & challenges
- Diagnose or rule out autism*
- Activate the right next steps and support

*Canvas Dx uses clinically validated AI trained on data from thousands of diverse children at risk for and with autism as well as other developmental conditions. It is highly accurate, proven in clinical studies, and FDA authorized for children ages 18 months to 6 years with developmental concern.

Get a diagnosis and next steps for your child – *in days.*

Take early action on developmental concern, so your child can benefit from early interventions and support.

After your doctor prescribes Canvas Dx, download the Canvas Dx app from the App Store or Google Play and enter the unique access code that was emailed to you. Using our app in the comfort of your home:



Answer a few multiple choice questions about your child.

This will take less than 10 minutes.



Upload two short videos of your child during regular playtime.

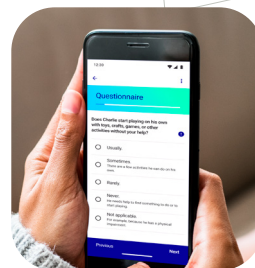
Our child development experts review these videos to observe and understand your child's natural behavior. See tips below.



Separately, your doctor also answers questions about your child's behavior and development.



Canvas Dx and your doctor does the rest. Canvas Dx combines this information and produces a result and detailed report your doctor uses to inform a diagnosis and activate next steps.



Helpful tips for recording videos



English



Spanish



Get started with Canvas Dx today.

Know more sooner,
so you can act earlier.



Watch how Canvas Dx works

“

Canvas Dx was a miracle for our family because we could act right away. Other families I know had to go from doctor to doctor to get to the bottom of their concerns, and it took forever. I'm so grateful our pediatrician knew about Canvas Dx. Our child is progressing well.

– Mother of now 4-year-old child



support@cognoa.com | www.cognoa.com

Canvas Dx Indications for Use

Canvas Dx is intended for use by healthcare providers as an aid in the diagnosis of autism spectrum disorder (ASD) for patients ages 18 months through 72 months who are at risk for developmental delay based on concerns of a parent, caregiver, or healthcare provider. The device is not intended for use as a stand-alone diagnostic device but as an adjunct to the diagnostic process. The device is for prescription use only. For full indications for use, precautions, warnings, and contraindications, visit www.cognoa.com/IFU.